



STATE OF THE ENVIRONMENT REPORT – SLOVAK REPUBLIC

2018

25th anniversary of annual reports

BASIC INFORMATION ABOUT THE SLOVAK REPUBLIC

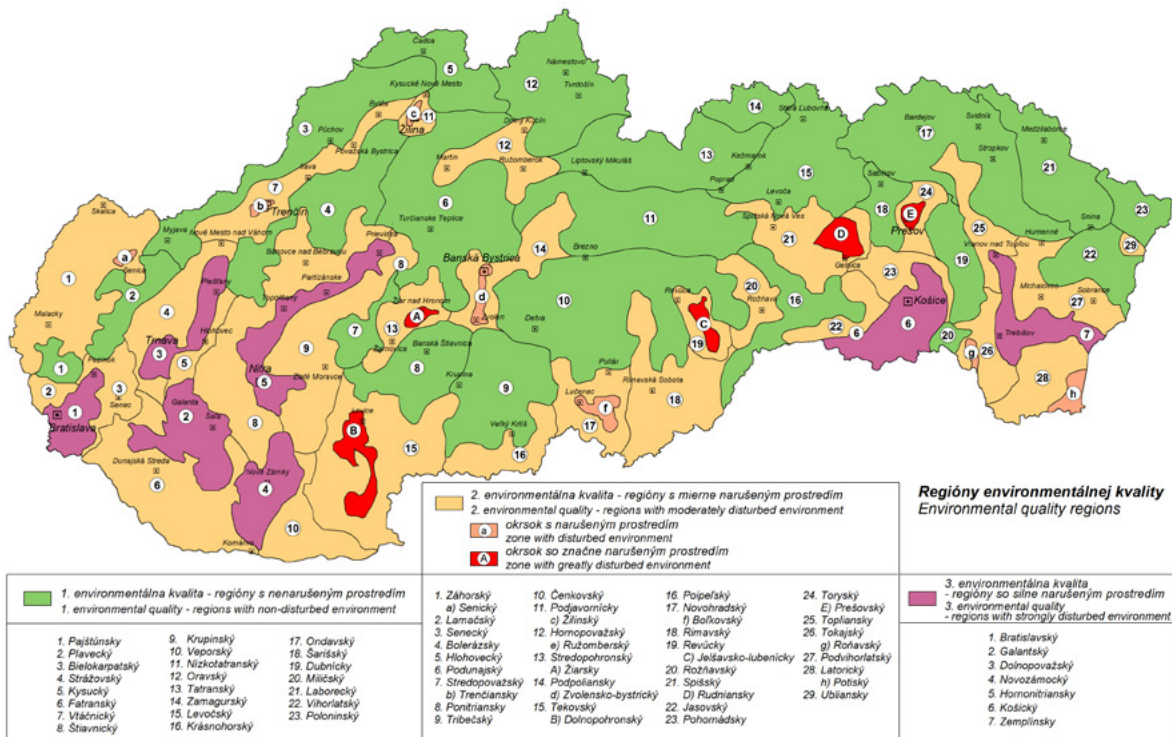
Table 001 I The SR in selected figures (2018)

FOUNDATION OF THE INDEPENDENT SR		1 JANUARY 1993
	CHARACTERISTICS (2018)	
AREA	49 034 KM ²	
Land types in percentages	AGRICULTURAL LAND	48.5 %
	FORESTS	41.3 %
	WATER BODIES	1.9 %
	BUILT-UP AREAS	4.9 %
	OTHER AREAS	3.4 %
HEIGHT ABOVE SEA LEVEL	95 M (MOUTH OF THE BODROG RIVER) / 2 655 M (GERLACHOVSKÝ ŠTÍT (GERLACHOV PEAK))	
	POPULATION (AS OF 31 DECEMBER 2018)	
TOTAL POPULATION	5 450 421, OF WHICH 48.8% MEN AND 51.2% WOMEN	
LIVE BIRTHS	57 639	
DEATHS	54 293	
NATURAL INCREASE	3 346	
INCREASE THROUGH IMMIGRATION	3 955	
TOTAL INCREASE	7 301	
LIFE EXPECTANCY AT BIRTH	MEN	73.71
	WOMEN	80.35
AVERAGE AGE (YEARS)	MEN	39.21
	WOMEN	42.36
POPULATION DENSITY	111.1 INHABITANTS/KM ²	
GROSS DOMESTIC PRODUCT AT CURRENT PRICES	EUR 89.72 BILLION	
INFLATION	2.5%	
REGISTERED UNEMPLOYMENT RATE	5.04%	
	ASSESSMENT OF SELECTED INDEXES	
ENVIRONMENTAL PERFORMANCE INDEX (EPI), YALE 2018	70.6% (28TH OF 180 ASSESSED COUNTRIES)	
GINI INDEX, WORLD BANK 2018	26.1%	
HUMAN DEVELOPMENT INDEX, UNDP 2018	0.855 - VERY HIGH	

The territory of the SR is split into 5 **environmental quality** categories. A comparison of the situation between 2010 and 2015 and the situation in 2018 shows a slight increase in regions with an undisturbed environment. This increase is thanks to the implementation of environmental measures

through subsidies allocated to the regions from the Operational Programme Environment in these years, as well as through amendments to laws applying to environment care.

Map 001 | Environment quality regions



Source: Slovak Environment Agency